



LiFePO₄ GOLFCART BATTERY

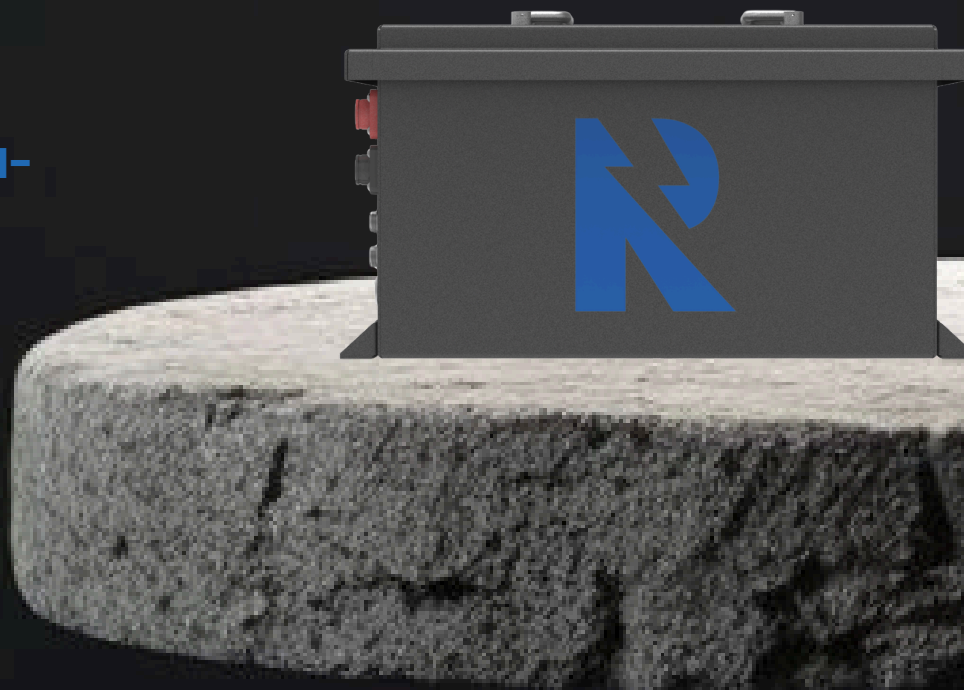
POWER ANYWHERE, ANYTIME.





Battery Pack Components

- **Battery Positive /Negative**
M8 Female terminal connectors with covers
- **Communication Interface**
PCAN bus support, upgradable firmware, Bluetooth monitoring with App, Wifi and remote monitoring (optional)
- **Battery Power Switch**
Power switch with activation function
- **Fixed Mount**
Secures battery in place
- **LCD + 1.5 M Cable**
Display module with 1.5M-length connection cable
- **Lifting Handle**
For safe transport





Custom-built solutions are available.

BATTERY SPECIFICATION

Model Number	Robust 51.2 V – 105 Ah
Cell Configuration	16S1P (16 in Series)
Cell Chemistry	LiFePO₄ (LFP)
Nominal Voltage	51.2 V
Voltage Range	44.8 V – 57.6 V
Rated Capacity	105 Ah
Energy Storage	5,376 Wh (5.38 kWh)
Max. Continuous Discharge	105 A (1C)
Peak Discharge	300 A for 30s
Max. Continuous Charge	105 A (1C)
Cycle Life	6000+ cycles @ 0.5C (80% DoD)
Operating Temperature (Chg)	0°C to 55°C
Operating Temperature (Dis)	-20°C to 60°C
Charging Voltage	57.6 V
Charging Current	≤105 A (52.5A / 0.5C recommended)
Dimensions	454 x 344 x 252 mm
Weight	~50kg
Charging Method	CC/CV (Constant Current/Voltage)
Low-Temp Protection	Do not charge below 0°C



Protection Features

Overcharge Protection

Overdischarge Protection

Overcurrent Protection

Short-Circuit Protection

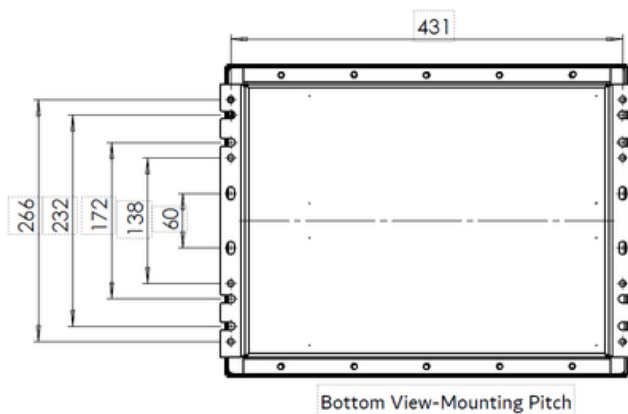
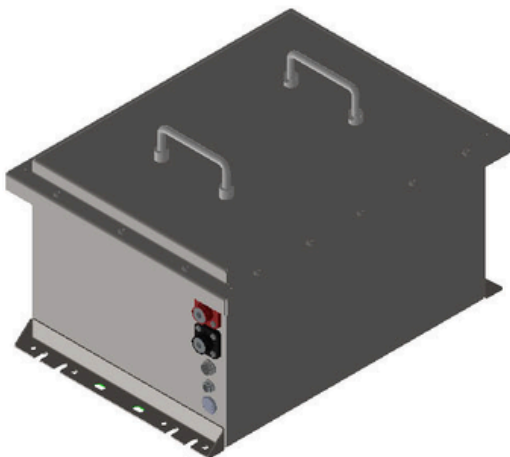
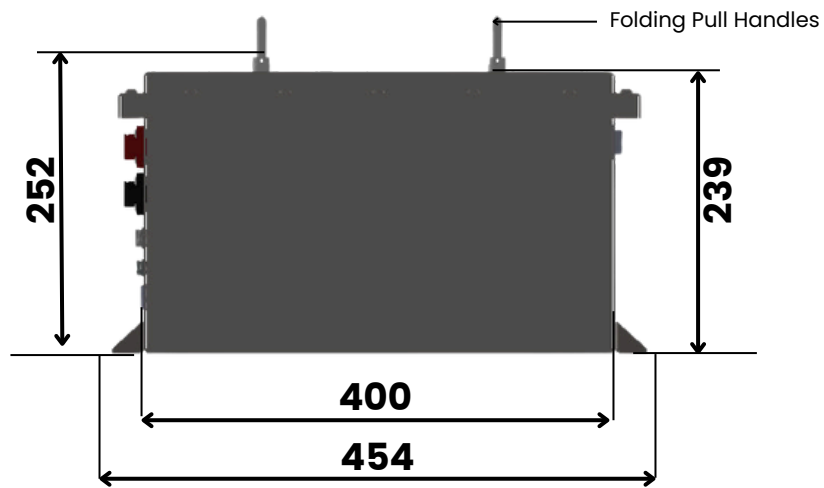
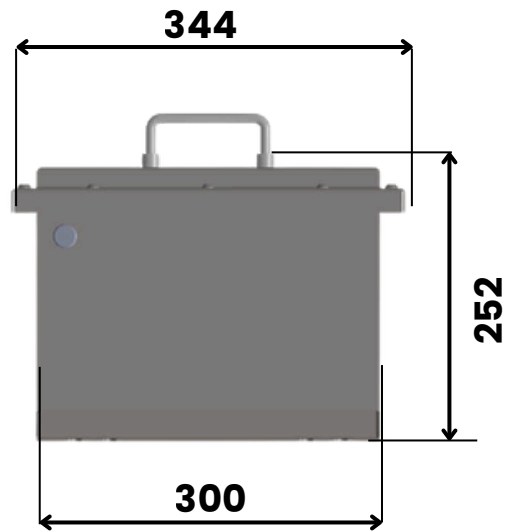
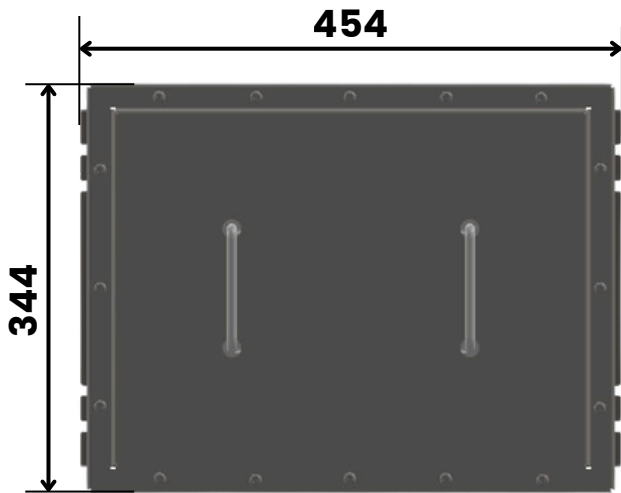
Temperature Protection

**Voltage Difference Protection
(Active Balancing)**

**Automatic MOS Shutdown on
Fault**



Dimensions



Bottom View-Mounting Pitch